

REGION 1 CHAMPIONSHIP SATURDAY BOLENDER HORSE PARK

PATTERN: 4 revised

CLASS: 1, 2, 4, 6, 8

Class: 1 Adult Mini Lvl 2 In-Hand
2 Adult Pony Lvl 2 In-Hand
4 Adult Horse Lvl 2 In-Hand
6 Youth Lvl 2 In-Hand
8 Open Lvl 2 In-Hand

1. Balance Beam

Class 1 Adult Mini &

Class 8 Open Handler with Mini:
360° turn

2. Back

3. Bridge

4. Trot/Top Hat

Class 1 Adult Mini &

Class 8 Open Handler with Mini:
360° turn

5. Large Box, send around, step up, 360° turn, step off

6. Teeter Totter, 180° turn, back off

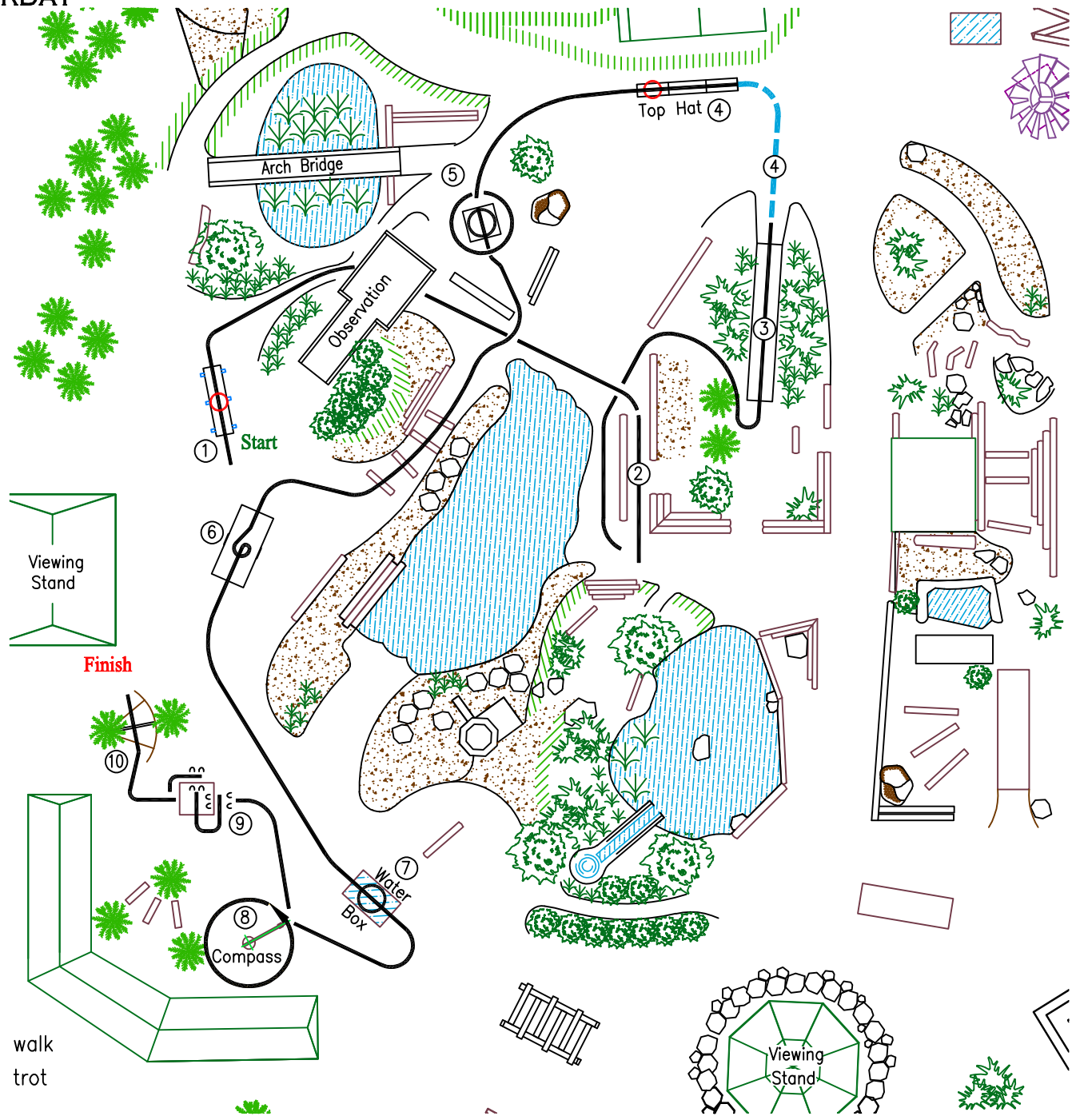
7. Water Box, 360° turn

8. Compass

9. Box, front feet up on box,

90° side step left, step up across,
front feet step down, 90°
side step left, step off

10. Gate



— walk
- - - trot