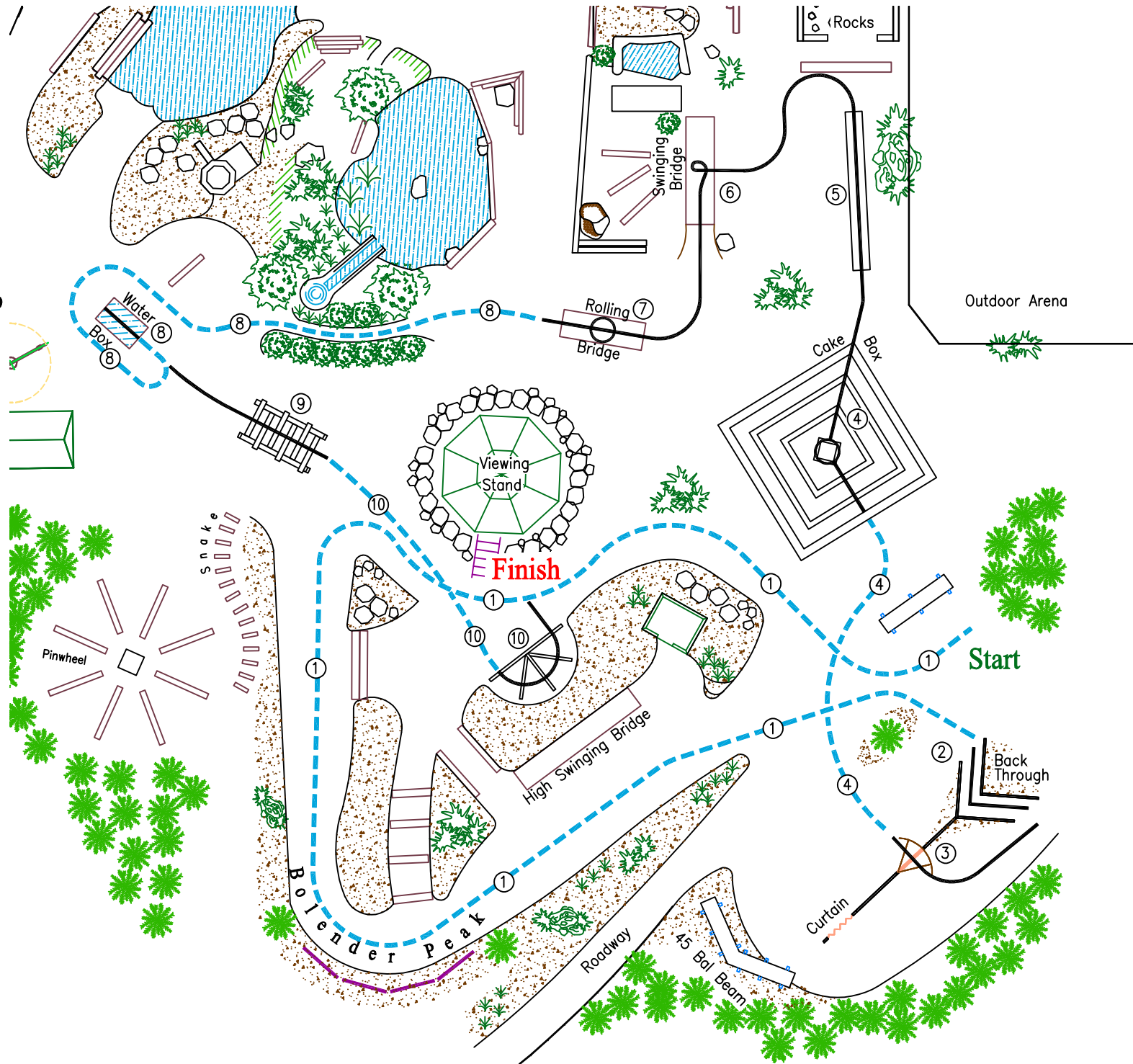


BOLENDER HORSE PARK

PATTERN: LEVEL 2 RIDE

CLASS: 4

1. Trot
2. Back "L"
3. Gate
4. Trot/Cakebox, 270° turn at top
5. Balance Beam
6. Swinging Bridge, 270° turn
7. Rolling Bridge, 360° turn
8. Trot/Water Bix, 180° turn
9. Ccross Bucks
10. Trot/Fan



- walk
- - - trot
- · - cantalope

