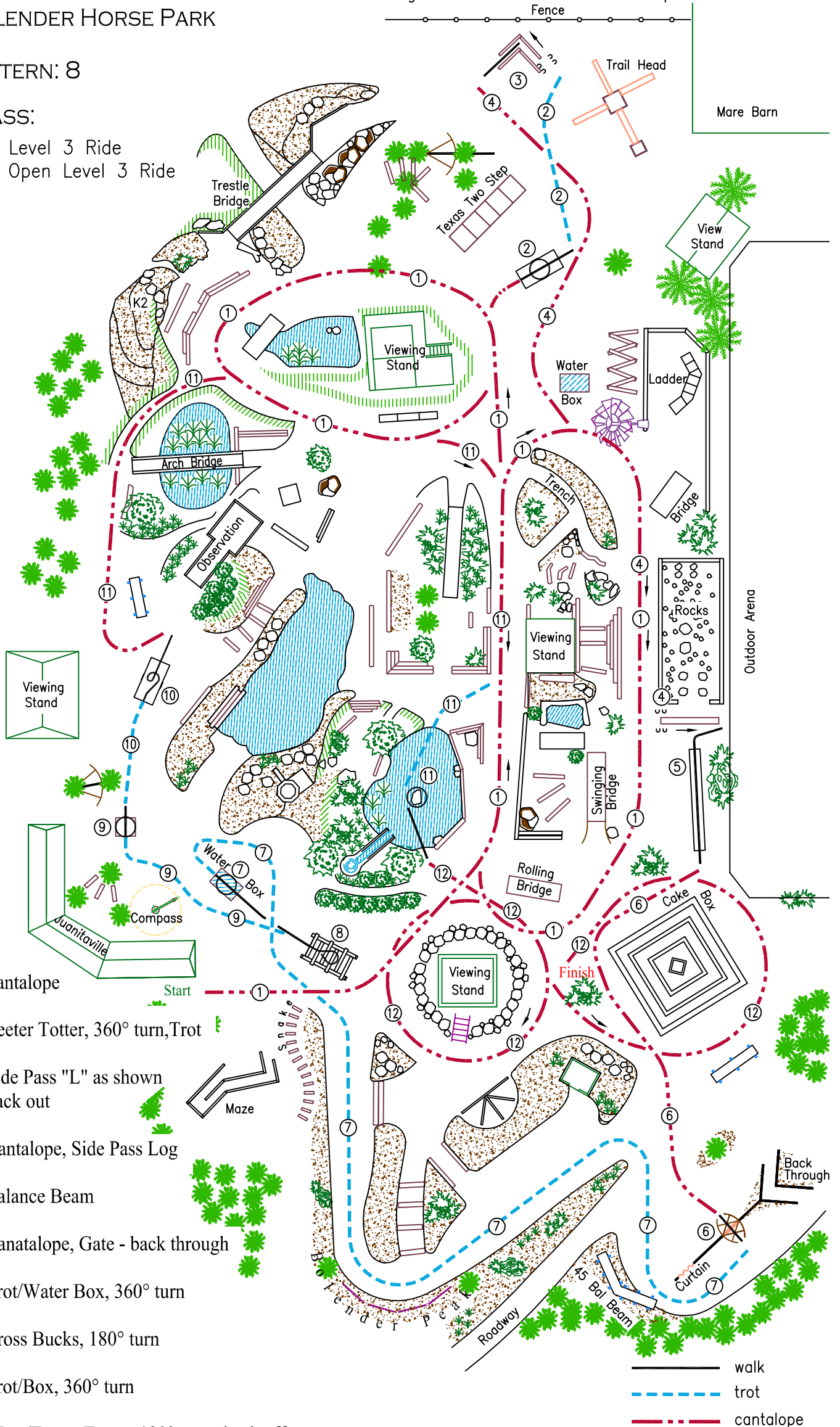


BOLENDER HORSE PARK

PATTERN: 8

CLASS:

- 15 Level 3 Ride
- 20 Open Level 3 Ride



1. Cantalope
2. Teeter Totter, 360° turn, Trot
3. Side Pass "L" as shown back out
4. Cantalope, Side Pass Log
5. Balance Beam
6. Canatalope, Gate - back through
7. Trot/Water Box, 360° turn
8. Cross Bucks, 180° turn
9. Trot/Box, 360° turn
10. Trot/Teeter Totter, 180° turn, back off
11. Cantalope/Trot/Pond, dismount Rock
12. Cantalope Fig. 8 w/flying lead change

— walk
 - - - trot
 - - - cantalope

