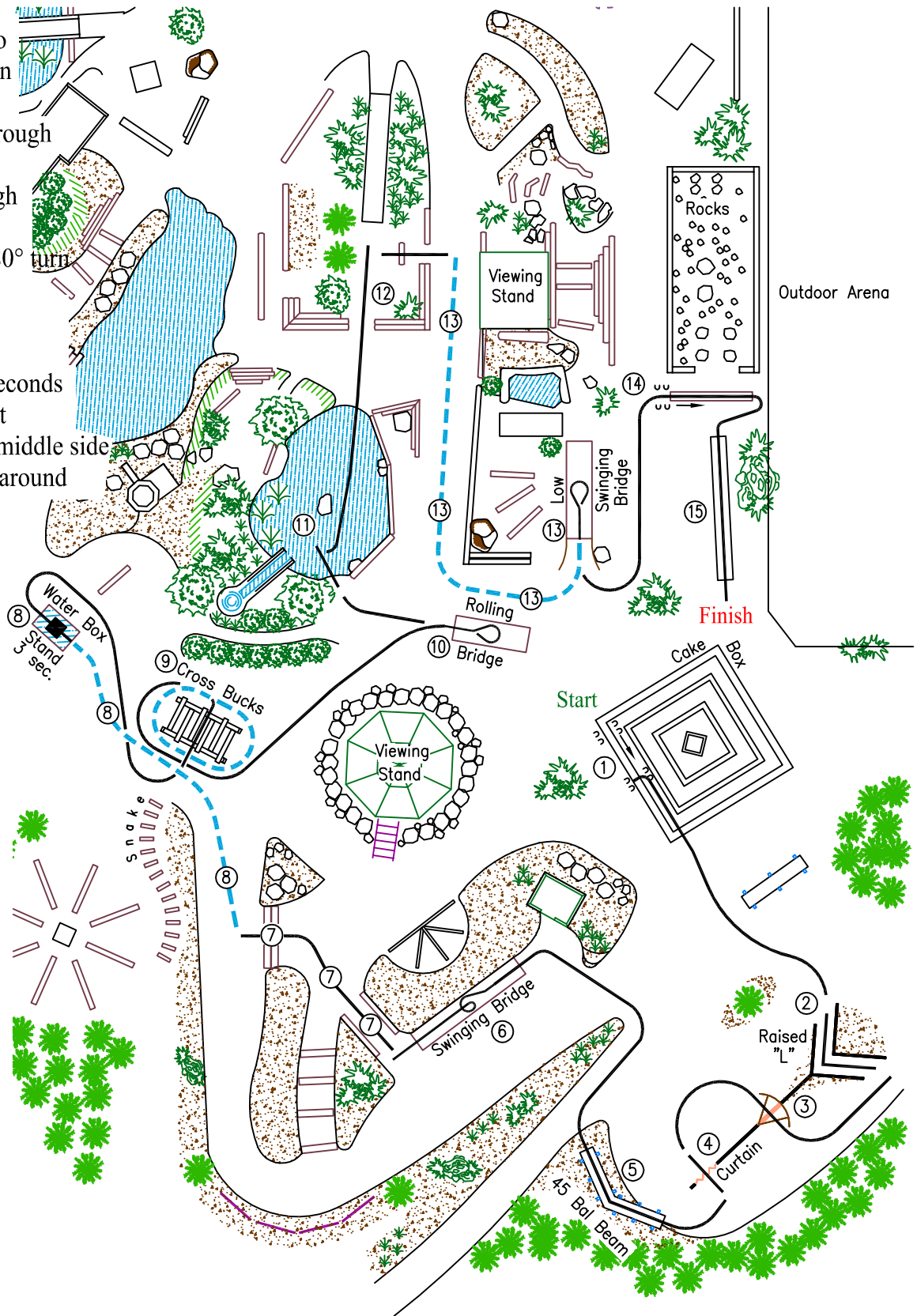


BOLENDER HORSE PARK CHAMPIONSHIP SUNDAY PATTERN: IN-HAND

CLASS: ADULT MINIATURE & OPEN IN-HAND

1. Cakebox, Sidepass to center, step up, turn 90° walk off
2. Raised "L", Back through
3. Gate
4. Curtain, Back through
5. 45 Balance Beam
6. Swinging Bridge, 180° turn back off
7. Down Hill, Step up
8. Trot to Water Box, walk in, stand 3 seconds in center, walk out
9. Cross Bucks, enter middle side walk through, send around at trot
10. Rolling Bridge, 180° turn
11. Back into water, turn walk out
12. Walk up Hill, turn back down
13. Trot to Swinging Bridge 180° turn
14. Side Pass log
15. Balance Beam



— walk
 - - - trot
 - . - . cantalope

