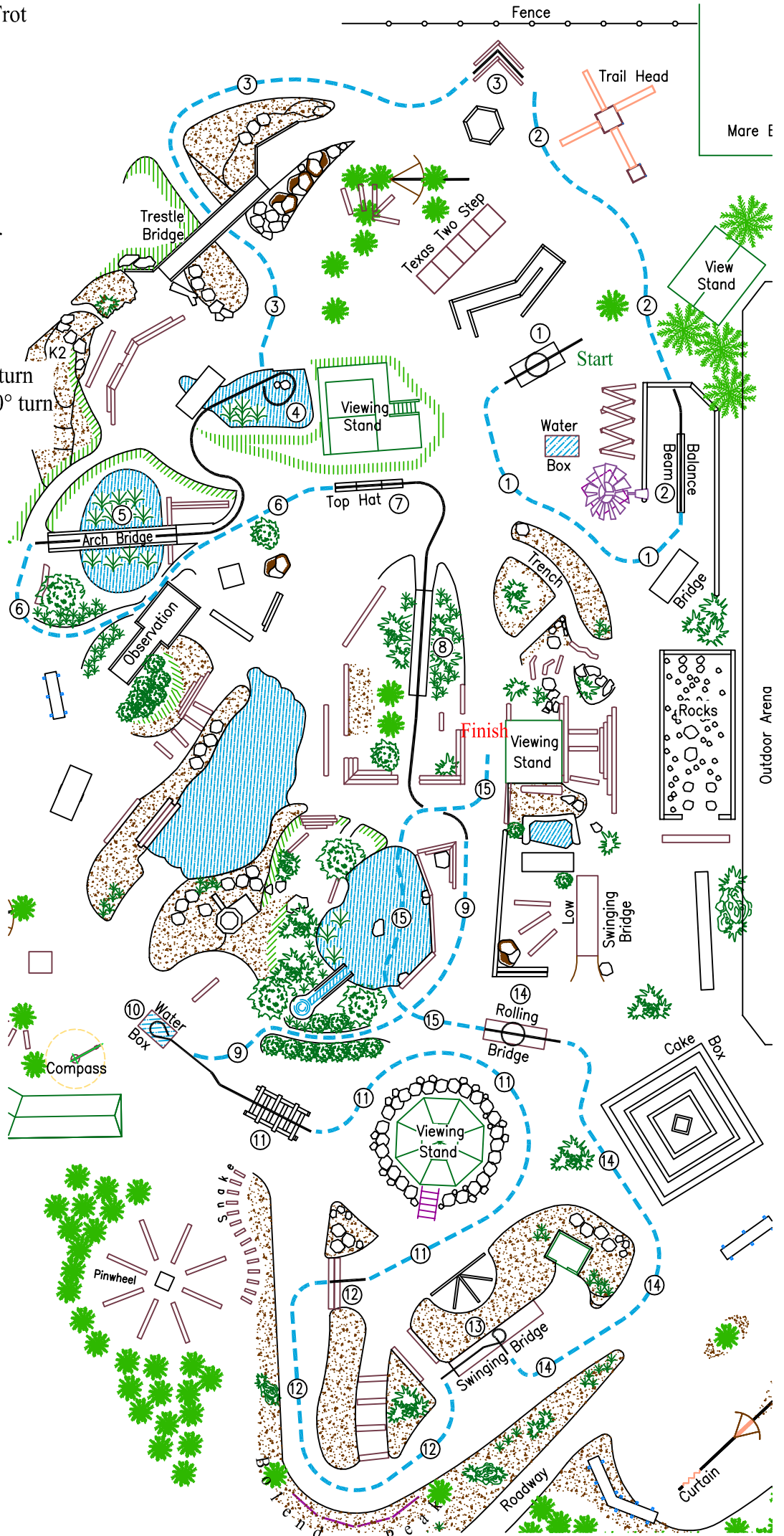


BOLENDER HORSE PARK CHAMPIONSHIP SUNDAY PATTERN: RIDING

CLASS: ADULT PONY, ADULT HORSE, YOUTH & OPEN RIDE

1. Teeter Totter, 360° turn/Trot
2. Balance Beam/Trot
3. Back "L"/Trot
4. Pond around rock
5. Trot
6. Arch Bridge
7. Top Hat
8. Long Bridge
9. Pick up Trot at log corner
continue over small hill
10. Water Box, 180° turn
11. Cross Bucks/Trot
12. Step up/Trot
13. Swinging Bridge, 270° turn
14. Trot/Rolling Bridge, 360° turn
15. Trot



— walk
 - - - trot
 - - - cantalope

