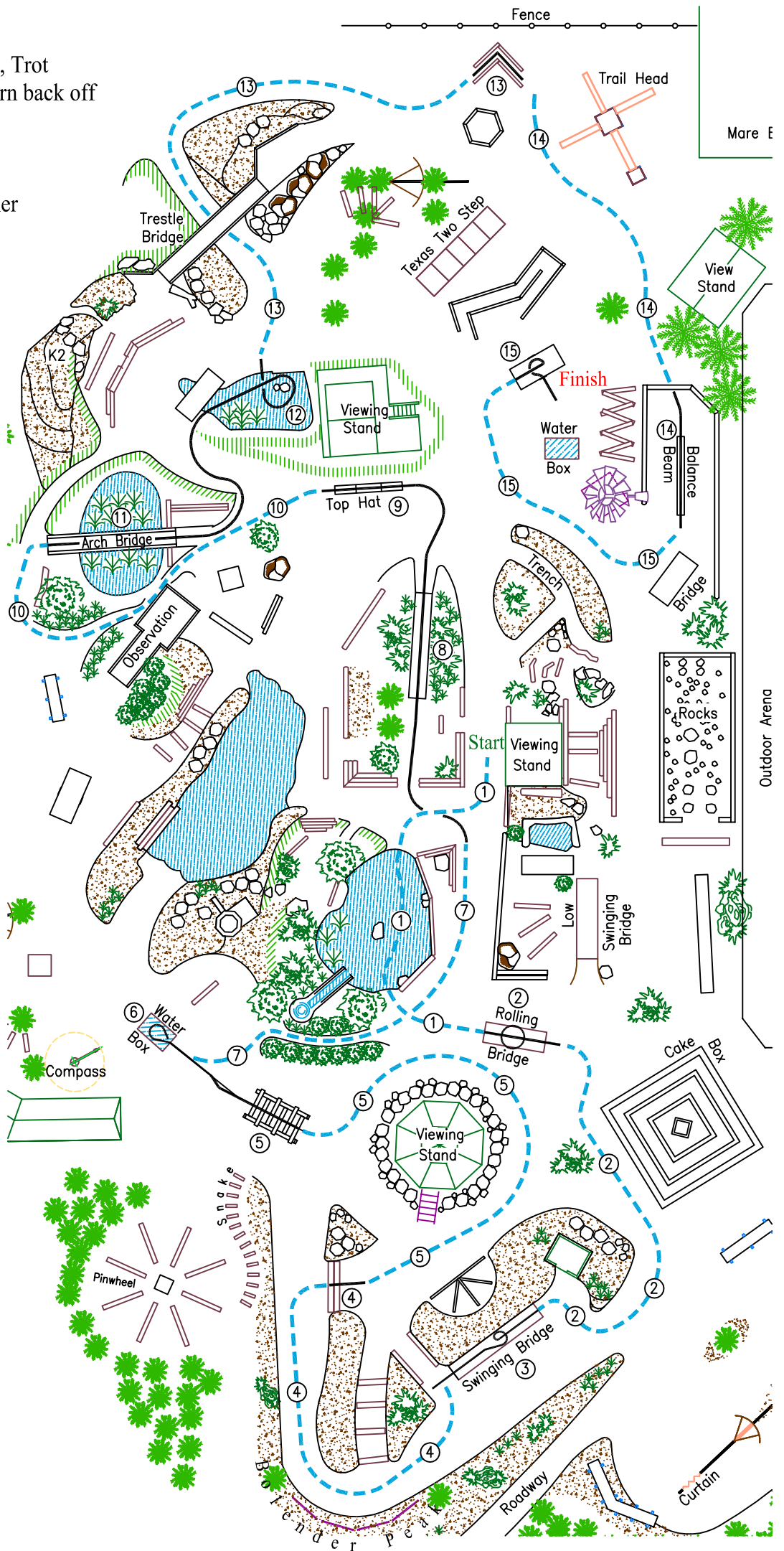


BOLENDER HORSE PARK CHAMPIONSHIP SUNDAY    PATTERN: RIDING

CLASS: ADULT PONY, ADULT HORSE, YOUTH & OPEN RIDE

1. Trot Water
2. Rolling Bridge, 360° turn, Trot
3. Swinging Bridge, 180° turn back off
4. Trot/Step Down
5. Trot/Cross Bucks
6. Water Box, 180° turn
7. Trot small hill to log corner
8. Long Bridge
9. Top Hat
10. Trot
11. Arch Bridge
12. Pond around rock
13. Trot/Back "L"
14. Trot/Balance Beam
15. Trot/Teeter Totter, turn left at center, exit middle right side



- walk
- - - trot
- . . cantalope

